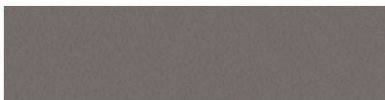
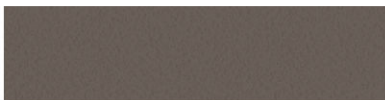




Crinkle Black (29/26ga) Prime



Crinkle Charcoal (29/26ga) Prime



Crinkle Burnished Slate (29/26ga) Prime



Crinkle Red (29/26ga) Prime



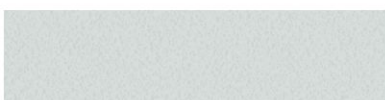
Crinkle Colony (29/26ga) Prime



Crinkle Clay (29/26ga) Prime



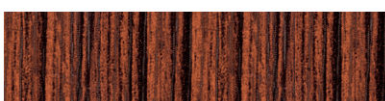
Crinkle Gray (29/26ga) Prime



Crinkle Bright White (29/26ga) Prime



Mountain Rock (29/26ga) Prime



Cedar (29/26ga) Prime



Hickory (29/26ga) Prime



Driftwood (29/26ga) Prime



Galvalume (29/26ga) Prime



Black (29/26ga) Prime & Thrifty



Charcoal (29/26ga) Prime & Thrifty



Gray (29/26ga) Prime & Thrifty



Pewter Gray (29/26ga) Prime & Thrifty



Bright White (29/26ga) Prime & Thrifty



Alamo (29/26ga) Prime



Forest Green (29/26ga) Prime & Thrifty



Green (29/26ga) Prime & Thrifty



Crimson Red (29/26ga) Prime



Red (29/26ga) Prime & Thrifty



Burgundy (29/26ga) Prime



Gallery Blue (29/26ga) Prime



Blue (29/26ga) Prime & Thrifty



Tan (29/26ga) Prime & Thrifty



Clay (29/26ga) Prime & Thrifty



Light Stone (29/26ga) Prime & Thrifty



ON TIME METAL

METAL ROOFING ■ BUILDING PACKAGES ■ GARAGE DOORS

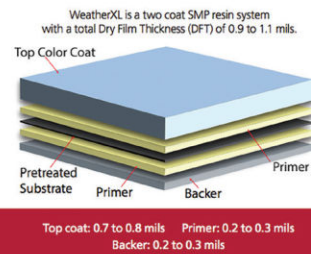
31 Wayfound Church Road

Hiddenite, NC 28636

Ph: 828-635-1001



Check out our one step vapor barrier solution!!





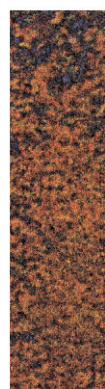
Top coat: 0.7 to 0.8 mils Primer: 0.2 to 0.3 mils
Backer: 0.2 to 0.3 mils

SHERWIN-WILLIAMS
Coil Coatings

WeatherXL™

Sherwin-Williams® and WeatherXL™ are trademarks of SWIMC LLC.

	PROFILES	HIDDEN FASTENERS	LONG TERM FADING	MANUFACTURER WARRANTY
Prime (WeatherXL) (Industrial Leader) 	29/26 Ga. Classic Rib		BEST	20-Year / Rust-Through
	26 Ga. Board & Batten	X		30-Year / Chalk & Fade
	26 Ga. Standing Seam	X		40-Year / Paint Adhesion
Thrifty 	29 Ga. Classic Rib		Basic	NO / Rust-Through
				10-Year / Chalk & Fade
				20-Year / Paint Adhesion



Vintage (29/26ga) Prime



Copper (29/26ga) Prime



Brown (29/26ga) Prime & Thrifty



Burnished Slate (29/26ga) Prime & Thrifty